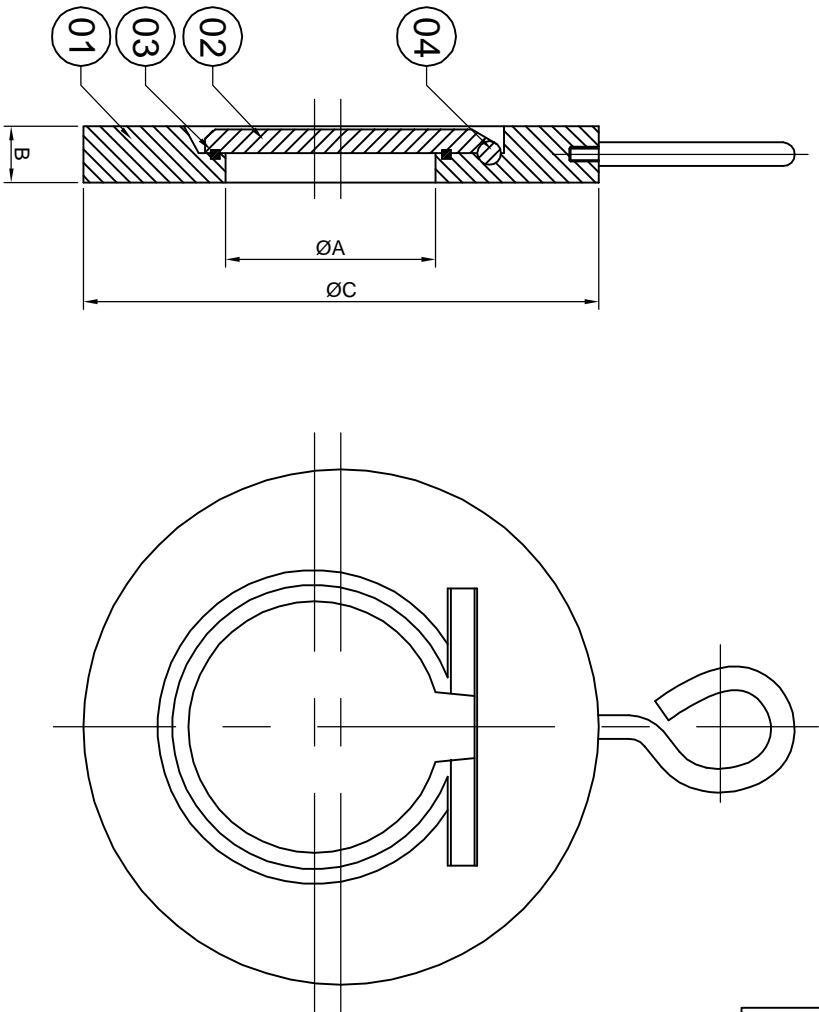


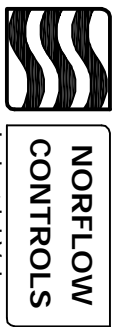
S I Z E	INCH	1"	1 1/2"	2"	2 1/2"	3"	4"	5"	6"	8"	10"	12"	14"	16"	18"	20"	24"
	M.M.	25	40	50	65	80	100	125	150	200	250	300	350	400	450	500	600
D I M E N S I O N	ØA	13	21	30	40	52	71	93	114	157	195	230	270	311	361	392	480
	B	19	19	19	19	19	19	22	22	29	38	51	--	--	--	--	--
	ØC	64	95	111	130	149	180	216	250	307	362	422	486	540	597	654	775



TECHNICAL DATA	
DESIGN & MANUFACTURING STD.	API 6D / ASME B16.34
INSPECTION & TESTING	API 598

HYDRO TEST: 300#	
BODY	SEAT
80 KG/CM ²	58 KG/CM ²

SR. NO.	DESCRIPTION	MATERIAL
01	BODY	CARBON STEEL
02	DISC	C.S., CF8, CF8M, CF3, CF3M
03	'O' RING	PTFE
04	HINGE PIN	AISI 304, 316, C.S.

DRN.: B.M.P	 <p>NORFLOW CONTROLS Industrial Valves</p>
CHK.: V.G.P	
APRD.: S.K.P	
DATE: 01.04.19	
SCALE.: NTS	<p>WAFER TYPE CHECK VALVE</p>
DRG NO.: NC/WCV/300/25 - 600	